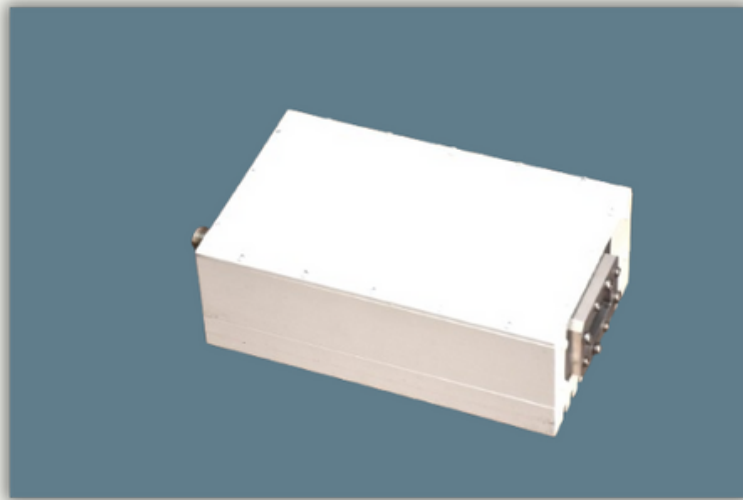




## 20W EXT C-BAND BUC



The **DEFEL Ext. C-Band Block Up Converter** (BUC) is a compact and robust solution for reliable satellite communication. Engineered to meet demanding operational environments, the BUC delivers superior performance with high gain, high linearity, wide temperature range compatibility, and advanced control features.

## Technical Specifications

Parameter	Specification
Frequency Band	Ext C-band
LO Frequency	5760 MHz
RF Output Frequency*	6.71 – 7.01 GHz
IF Input Frequency*	950 – 1250 MHz
Gain	67 dB Typical
Gain Flatness	±2 dB (Typical)
Phase Noise	Meets or exceeds IESS 308/309 (Internal 10MHz clock)
10 MHz Reference	Internal/External/Auto-Sense: ±5 dBm

\* IF and RF can be customized based on the customer requirement

## Power and Connectivity

Parameter	Specification
Output Power	20W
Input Voltage*	28V DC/ 230V AC (optional)
Max Power Dissipation	100W
RF Input Connector	N-Type
RF Output Connector	N-Type/CPR137(optional)
M&C	RS232, <b>SNMP</b> , Web Interface

\* Input Voltage can be AC /DC based on the customer requirement

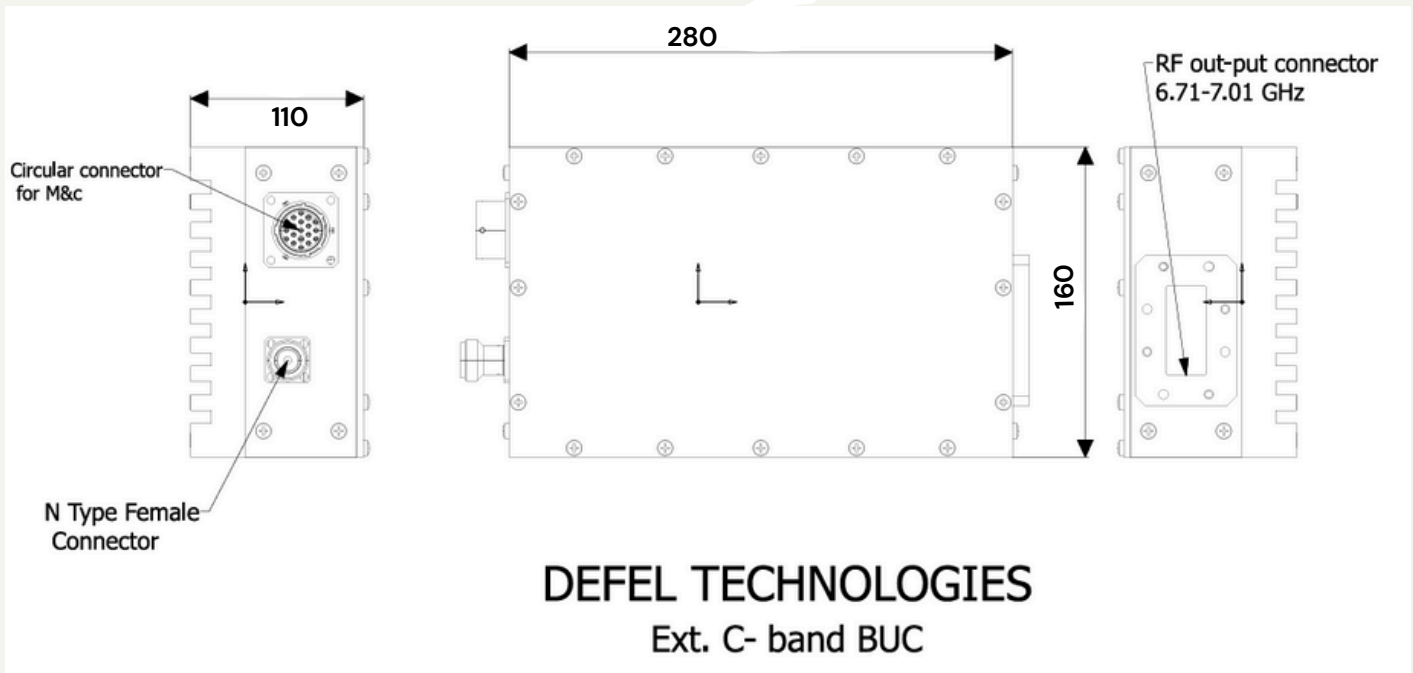
## Environmental and Mechanical

Parameter	Specification
Operating Temperature	-40°C to +55°C
Cooling	Conduction colling with and without fan
Status Indicator	Green LED for Power, Red for Fault
Enclosure Dimension	280(L) x 160(W) x 110(H) mm
Weight *	≤ 5Kg
Status Connectivity	Circular connector, RJ45 (optional)

\*Weight may vary based on the on AC/DC Voltage

\* In case of without fan, bigger heatsink will be attached to the Module

## Mechanical Drawing \*



\* Mechanical – Actual size may vary